

 Stephen Lawrence  
Charitable Trust





# OUR STORY

<https://youtu.be/T6lrB5k582Y>



# OVERVIEW OF THE TRUST

Founded in 1998 by Baroness Doreen Lawrence of Clarendon

Became a registered charity in 2004

Funded via donations, Trusts and foundations

Small charity 'punching above its weight!'

Board of Trustees

# STEPHEN LAWRENCE CHARITABLE TRUST



**1993** – Nelson Mandela visits the UK and visits the Lawrence Family

**1998** – The Stephen Lawrence Charitable Trust founded

The first 3 Stephen Lawrence bursaries were awarded to students in **Jamaica** (where Stephen is buried), **The UK** (where Stephen lived), and **South Africa** by way of thanks for the support received from Nelson Mandela.



# THE STEPHEN LAWRENCE CENTRE - OPENED 2008

Architect - Sir David Adjaye



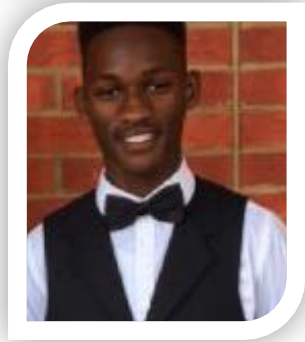
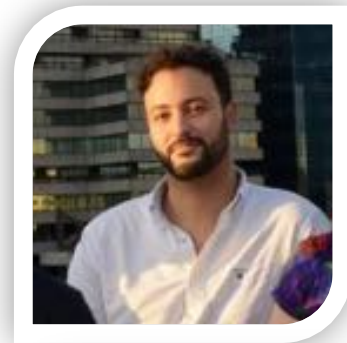
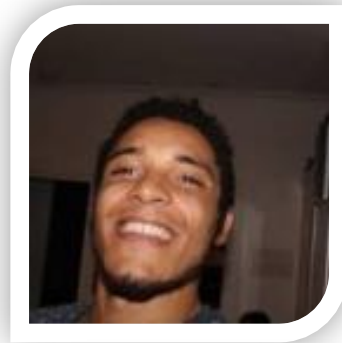
Royal Approval



# BURSARIES – ALUMNI

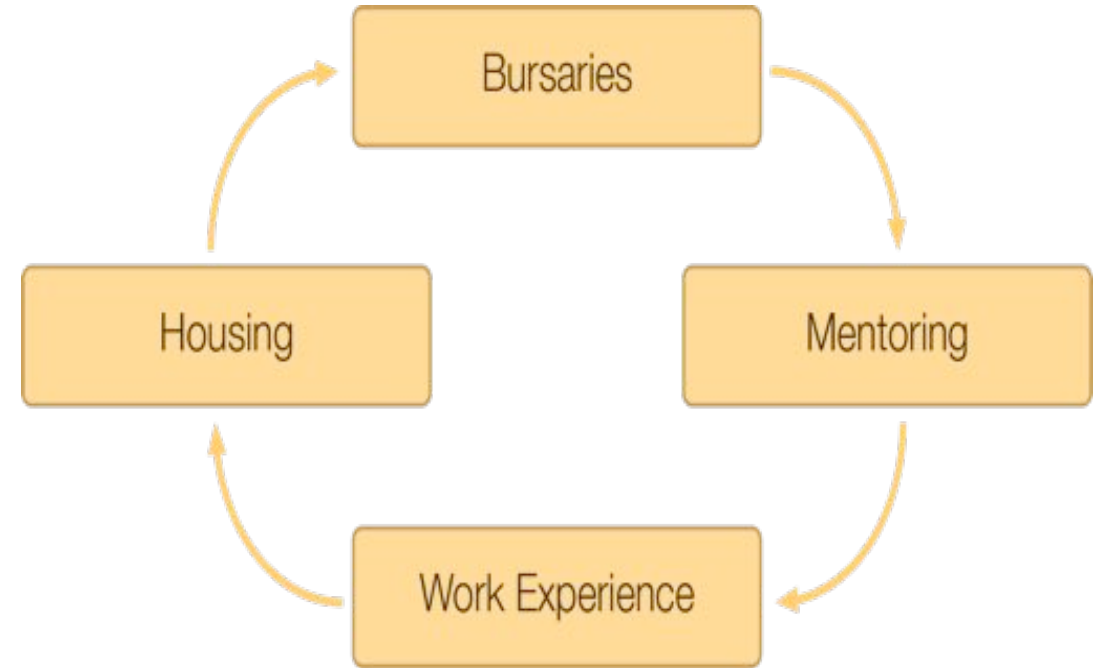
Since 1998 the Trust have awarded 125 bursaries to aspiring young architects

2016 recipients; from Part I to Part III



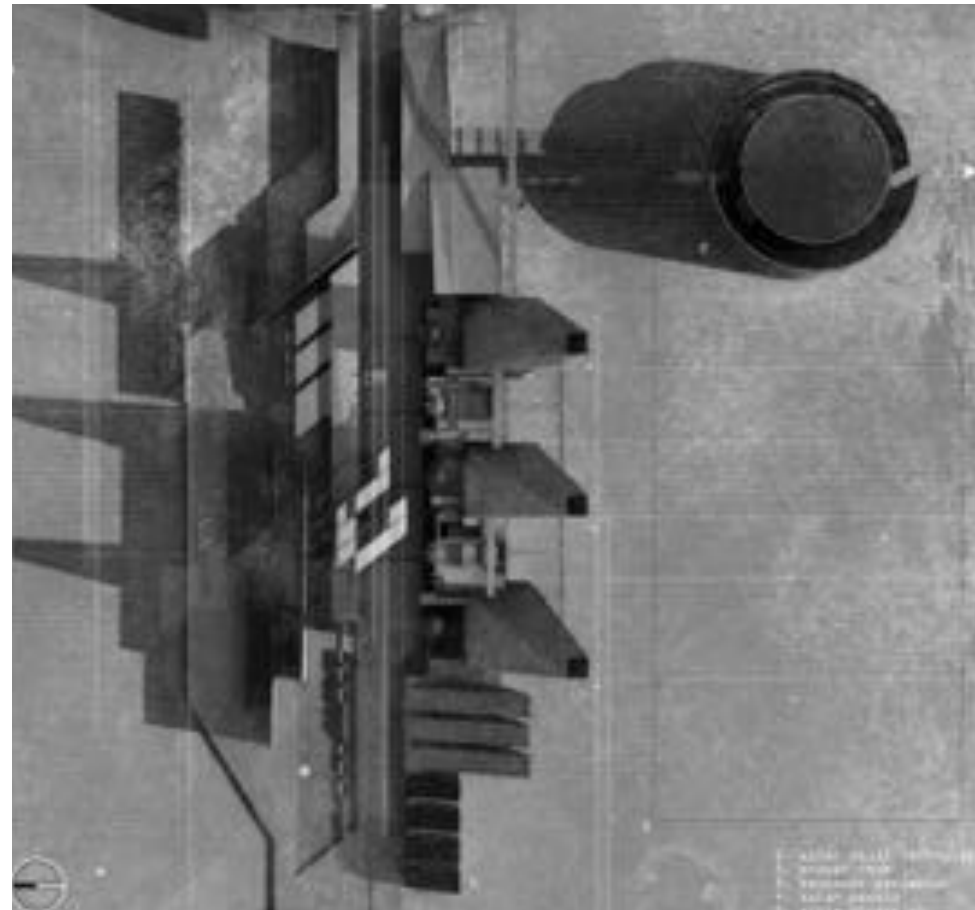


# OUR SOLUTION: BUILDING FUTURES



# SLCT ALUMNI

RIBA Students Medal Nomination





# SLCT ALUMNI

Bloomberg HQ – Foster + Partners



# SLCT ALUMNI

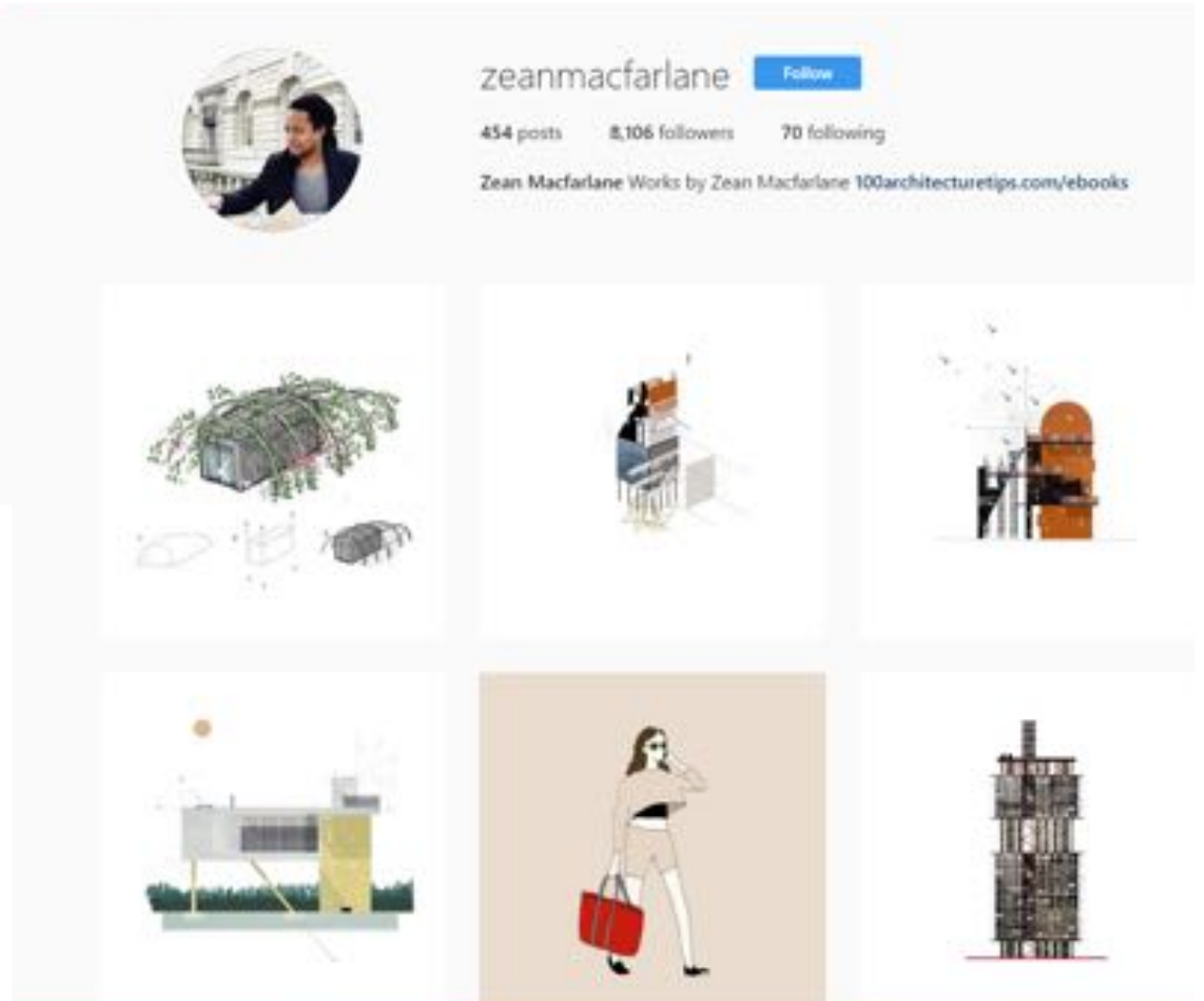


# SLCT ALUMNI

**Zein Macfarlane**

Instagram: @zeinmacfarlane

Website: [www.zeinmacfarlane.com](http://www.zeinmacfarlane.com)



# THE CO-WORKING HUB – FACILITATING TALENT

Creative Co-Worker space at The Stephen Lawrence Centre

100% pro-Bono support from committed partners

Providing young entrepreneurs within the built environment a space to:

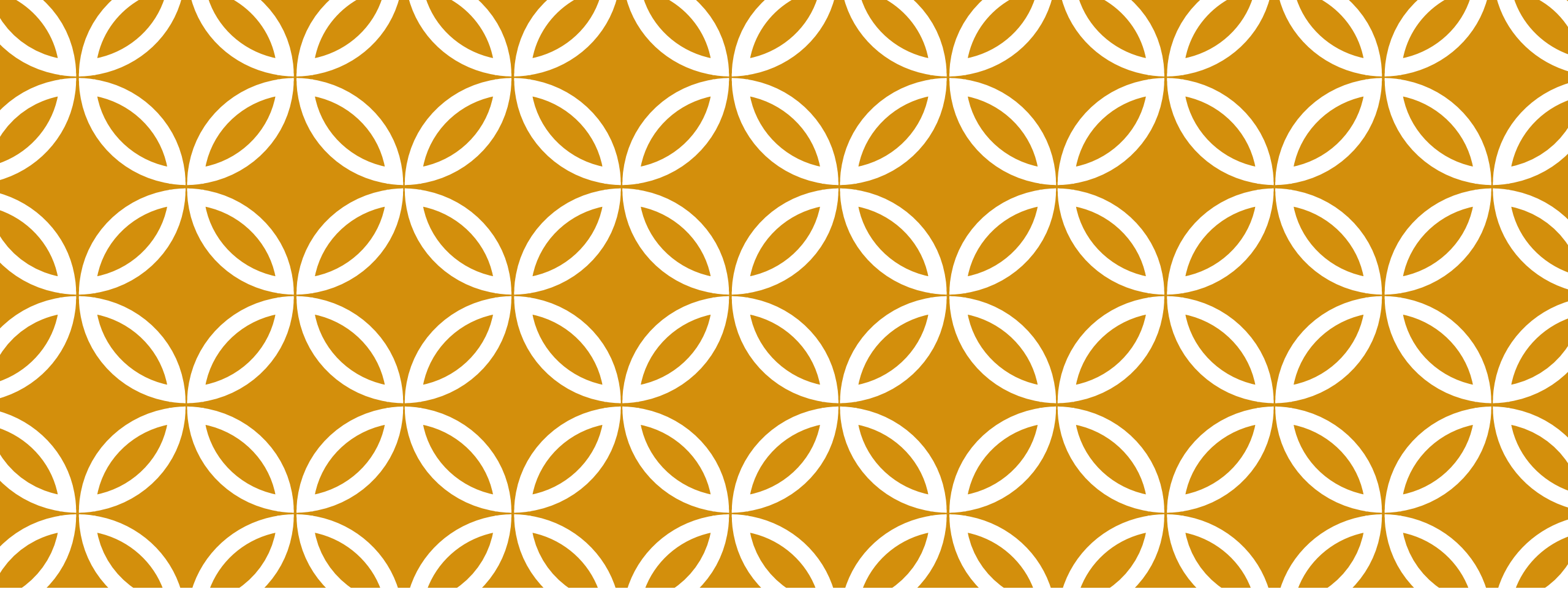
Access industry experts to blossom and thrive

Breakdown barriers

Supporting our alumni beyond education







**THANKYOU**

