

BROCKLEY SOCIETY



Issue 141 November 2017
Charity No: 1004245

Delivered free to 4000 households in Brockley Conservation Area
three times a year: March, June and November

BROCKLEY SOCIETY

Brockley Society AGM

Wednesday 15 November 7.30pm

Brockley Social Club, 240 Brockley Road, SE4 2SU
There are at least four reasons to come to our AGM

- The people at the heart of Brockley's businesses photo competition. We will project the long list and three winners. (See page 2)
- Ruth Wong will talk about Edimental Gardening - how to have an edible garden that is also beautiful. (See page 5)
- FILM: Brockley: Then&Now - The 2015 Mass Photo on Hilly Fields was inspired by a 1918 black-and-white photo of about 6,000 people on Hilly Fields marking the anniversary of the start of First World War. How we decided to take a new photo and the preparations for it are captured in a short film.
- AGM business, 8.30pm: As required by charity law, Brockley Society elects officers and other sub-committees.

Officer elections:

Chair, Vice Chair, Secretary and Treasurer
Sub-committees: Planning group (meets monthly).
Street Trees for Living. Hilly Fields Fayre. Help with Funding applications. Brockley Voices (our reminiscence project). Communications: including the Newsletter (editorial, advertising, overseeing distribution), website, Facebook, Twitter, circular emails. Brockley Society Archives. MidWinter Warmer 1-5pm for seniors in February. Breakspears Mews Community Garden. General Admin help is also needed!

If you wish to stand for any of these positions or sub-committees, please email chair@brockleysociety.org.uk - or turn up on the night.

Brockley's Second Festival of Ideas for Change

Sunday 19 November 2017, 10am-5.30pm

Lewisham Southwark College, Lewisham Way, SE4 1UT

MidWinter Warmer for seniors

10 February 2018, Brockley Social Club

Hilly Fields Midsummer Fayre

Saturday 23 June 2018, 12 noon to 5pm

Open Studios Artists' Christmas Fair

St Peter's Church, Wickham Road
25 November, 12noon-4pm

Ladywell Christmas Market

Ladywell High Street, SE13 7UZ
Saturday 2 December, 12 to 4pm

Brockley Community Christmas Market

Coulgate Street, SE4 2RW, by Brockley Station
Sunday 9 December, 12 noon to 6pm



Christmas Pantomime at Greenwich Theatre

Sun 26 November, 5pm

Brockley Society books a block of 150 tickets, which reduces adult prices to £18. Children pay £14. Please send postal orders or cheques, payable to Brockley Society, stating the number of children/adult tickets and include a stamped, addressed envelope to: BrocSoc Box-Office, 53 Lucas Street, SE8 4QH by Thursday 16 November. No cash please. Your seats will be booked only when payment is received.

BROCKLEY SOCIETY

BROCKLEY FESTIVAL OF IDEAS FOR CHANGE

FREE

Housing, Homelessness and Inequality

Many people, particularly the young, are unable to afford housing and accommodation. Homelessness is visible everywhere.

Food and the Environment

How and where is our food produced? How can we protect the environment?

From Ideas to Action

Practical examples

Debt, Money and Exploitation

What is at the root of the financial crisis and how can poverty be tackled?

Battle of Lewisham 40 years later

After the 1977 community defeat of right-wing, racist forces, what is the situation today for Lewisham's black community?



Sunday 19 November 2017
10am till 5.30pm

Lewisham Southwark College, Lewisham Way, SE4 1UT

Many interesting thinkers and activists live in and around Brockley.

Our second Festival celebrates this great community strength, bringing together diverse speakers on some of the big issues of our time.

We will offer challenging new perspectives to stimulate debate and inspire action.

This year's Festival will include break-out groups, films, and recordings.

Tea and coffee free in The Ideas Cafe. Affordable food, or bring your own.



follow us @broc_so



Entrance is free, but contribute £5 if you can, as the event will be self-funded. View Festival details and book your FREE ticket to reserve your place at

www.brockleysociety.org.uk

LEWISHAM
SOUTHWARK
COLLEGE

Xmas Sale — Mass Photo on Hilly Fields

Exciting and cost-effective Christmas gifts!

You always wanted a copy of the historic mass photo, but never got round to it. Or you thought it cost too much.

Now a massive reduction of prices makes this easy!

20%
of ORIGINAL
PRICE

Large photo (£100) now £20 Medium photo (£25) now £5
Small photo (£10) now £2 A5 cards of the 1918 photo: £2

Available at — Brockley Society AGM (see above)

Open Studios Artists' Christmas Fair, St Peter's Church (see p2)

From www.brockleysociety.org.uk/shop

By emailing chair@brockleysociety.org.uk to arrange local collection



Farmers' Market
by the Café
Saturday 10-3 PM
'the second Saturday every month.'

 Friends of Hilly Fields www.hilly.org.uk  **BROCKLEY SOCIETY**

The people at the heart of Brockley's businesses

We were absolutely delighted by the response to our Brockley Society portrait photo competition. We asked for portraits of local business people — who help make Brockley great and keep it a thriving community. We received a number of fabulous images and had an excellent evening on Tuesday 10 October when the results of the competition were announced at the new Parlez bar and restaurant, hosted generously by Louis Edwards and his team and also on our website.

Our congratulations to the first, second and third prize winners Lara Gosling, Pavel Legonkov and Phil Hall and also to

the other excellent entrants who submitted photographs of a fantastic artistic standard. We will show them at the Brockley Society AGM, Wednesday 15 November, (*see p1*) and display them on our website.

The event really did showcase wonderful things about Brockley. The standard and range of photographs was superb and the judges Pete Bartlett and Juliet Johnson had considerable difficulty deciding on the winners.

This event will definitely run again so please keep an eye out for next year's entry date when we hope to have as fantastic a range of photographs as this year.

Brockley Society Secretary

BROCKLEY SOCIETY

President: Gillian Heywood, MBE

www.brockleysociety.org.uk @broc_soc

Chair 020 8692 3829
chair@brockleysociety.org.uk

Fayre www.brockleysociety.org.uk

Newsletter news@brockleysociety.org.uk

Newsletter advertising 020 8692 3829

chair@brockleysociety.org.uk

Local history 07903 150 099

fonemefirst@gmail.com

Planning & conservation planning@brockleysociety.org.uk

Planners, architects and others with conservation

knowledge or interest are welcome to join our planning

and conservation group. See planning email above.

Trees w

brockleystreettrees.blogspot.co.uk

Breakspears Mews Community Garden breakspearsmews@brockleysociety.org.uk

Join our occasional email circulation about

Brockley Society and local events:

email chair@brockleysociety.org.uk

Everyone living in the Brockley Conservation

area is automatically a member of the Brockley

Society. *The Brockley Society welcomes all.*

Newsletter copy deadlines:

1 February, 1 May, 1 October

Email to news@brockleysociety.org.uk

Advertising rates - back page

Brockley Open Studios Artists' Christmas Fair

25 November, St Peter's Church

Last year we hosted our first Christmas Fair at St. Peter's Church in Brockley where we welcomed some 250 visitors and featured artworks including paintings, jewellery, pottery, cards, print, fabric, and sculpture, among others. The Fair is open to local artists to showcase and sell their artwork to the public.

The Brockley Artists Christmas Fair will take place on 25th November 2017, from 12 to 4pm, at St. Peter's Church Brockley, Wickham Road, SE4 1LT.

This year we will also have a Kids' Corner. This will be a fun activity where kids will learn how to make Christmas decorations and will be able to take these home to put on their Christmas tree.

Join us to celebrate Art and Christmas.

Sara Vinney

A Brockley resident for many years, Sara Vinney was well-known and loved. She derived much pleasure from being with animals and children and had a deep connection to nature. She passed away peacefully at home on the 15th June. Large numbers of local people came to her funeral. May she rest in Peace.





Our day-long Innovation and Conservation conference in Prendergast Hilly Fields College on 10 June marked 50 years of the Civic Amenities Act. Audio recordings of the fascinating presentations are available on Brockley Society's website.

Chair of Council, Councillor Obajimi Adefiran opened the conference, followed by keynote speaker **Laura Sandys (left), Vice President of Civic Voice** and daughter of Duncan Sandys MP, who instigated the 1967 Civic Amenities Act.



She spoke on Why the Civic Movement is so important and described the horrifying demolition of old buildings 50 years ago, before the Act.

'Conservation areas are about identity and cohesion,' she said. 'They are not for the protection of the grand but of the areas in which normal people live. Your neighbourhood heritage gives you and your neighbours common personality and identity.'

She paid tribute to Lewisham's conservation societies, several of which were present: 'You are a font of local knowledge: history, contacts and continuity.' She encouraged us to work with planners, conservation staff, developers and property owners as 'honest brokers'.

'No single factor will preserve Conservation Areas. It is a combination of lots of actions

Innovation & Conservation



and pressure, but never forget that people power matters.' www.civicvoice.org.uk

Our second keynote speaker, **Duncan McCallum (left) of Historic England**, spoke on The present state of Conservation Areas. He told us there were 10,105 conservation areas in England.

'Planning authorities have a duty to determine areas of special architectural or historic interest which it is desirable to preserve or enhance.'

In 2016 Lewisham had one conservation area at risk, Deptford High Street, but a management plan would hopefully change that. 'It has a Grade II listed carriage ramp (1836, London's oldest railway structure); derelict land and arches are being re-used; commercial, retail, and 132 homes are being built; start-up businesses are encouraged.'

Top threats to conservation areas included: unsympathetic doors/windows; poor street maintenance; walls, fences or hedges; effects of traffic management; alterations to walls/roofs/chimneys; unsympathetic extensions; impact of advertisements; neglected green spaces.

Duncan raised questions: the risk of creating exclusive zones for an older, richer elite; what buildings would form future conservation areas; densification, tall buildings, poor maintenance, anti-social behaviour.

'Despite all the challenges, I remain optimistic about the future of our heritage,

because people care,' he concluded. <https://historicingland.org.uk>

Nicholas Boys-Smith (below) of Create Streets, an independent research institute, spoke on How to make streets beautiful and popular.



'Good design is not just a matter of opinion,' he said. 'Data exists on where people are happy – and we can use it, but we must think in the round. Some architects obsess

about light, but we need to consider greenery, height, connectivity, size of urban blocks, space between buildings and space inside the front door, beauty, nature of facades and density.'

Good design elements tended to occur in the 19th Century suburbs: walkability, human scale, advantages both of suburbia and of the city.

'Calling a series of blocks a garden doesn't make it a garden. Calling it Kidbrooke Village doesn't make it a village.'

'In a successful city you are together, but also alone: with a public street near your front door you can go into the street but you can also retreat home. A corridor is not the same.' <http://dev.createstreets.com>

Malcolm Bacchus from Telegraph Hill Society talked through the presentation sent by Lewisham Planning Department. In between the keynote speakers we had case studies of local schemes presented by Rhys Cannon of Gruff Architects (47 Breakspears Road); Paul Russell of Russell + May (289 Lewisham Way); Charles Coull of CSC.A (4 Ashby Mews); Murray Groves and Adriana Natcheva of Groves Natcheva (Cedar Mews, Geoffrey Road); Jon Broome, a specialist in self-build; Zean Mair-MacFarlane, alumnus of the Stephen Lawrence Charitable Trust; Doug Evans of Thomas Ford & Partners; Tristan Wigfall of alma-nac (10 Tressillian Crescent).

- Audio recordings and presentations: www.brockleysociety.org.uk



An archive print of the 2015 Mass Photo on Hilly Fields now hangs in Lewisham Civic Centre, unveiled on Friday 4 August by Mayor Sir Steve Bullock (right) with Clare Cowen, Brockley Society Chair. Photo: Lorna Jackson

Street Trees for Living



Rebranded this year as Street Trees for Living to reflect borough-wide ambitions, Brockley Society's Street Tree Committee continues to expand. We can report that 200-250 street trees

will be planted this winter, in Brockley and in other areas of Lewisham.

Private residents raised most of the money to fund the planting, supplemented by grants from the GLA, local assemblies and businesses.

Street level campaigns have made this possible. We have supported local residents getting together to raise money and decide locations and species – from old favourites like silver birch and flowering cherry, to olive trees, strawberry trees, box elder, hibiscus and lilac. Bare streets in Lewisham can become a thing of the past.

We have hosted three public events: on 2 June a celebration to mark the planting of 20 trees in Vanguard Street, Deptford, attended by local MP Vicky Foxcroft; on 7 June a tree-climbing demonstration in Hilly Fields by writer and tree-climber Jack Cooke; and on 29 August we hosted the BBC's Gardeners' Question Time in Prendergast Hilly Fields College, attended by over 300 people.

We are always looking for new ways to promote our work. We work in partnership with Lewisham Council's Green Scene and have developed a six-year relationship based on mutual understanding and good will despite ever-shrinking budgets within local government. We appreciate the many direct and indirect ways they support our work.

Street Trees for Living is run entirely by volunteers. We have grown by managing



Celebrating 21 trees planted in Vanguard Street

our work more efficiently, but to fulfil our planting ambitions for Lewisham we need to expand our small and friendly remote-working team. Some of us have tree knowledge but most of our work is the support of our tree guardians and local street reps, the management of information, and promotion of our campaign. If that interests you, reader, please get in touch with us: <https://brockleystreettrees.blogspot.co.uk/p/how-to-help-us-plant-more-street-trees.html>



James Wong discusses suitable plants for Claudia Mark's raised beds at Gardeners' Question Time. Photo: Geraldine Walsh

The Crofton Park Story

Brockley Society's Open Meeting on Wednesday 12 July enjoyed a lively talk with pictures from historian and local resident Carol Harris. She described Crofton Park's development from farmland to suburbia. It was interesting to see old area boundaries and photographs of the many thriving independent businesses with quite stunning facades and shop windows.

And we were intrigued that the three daughters of a family in the area may have been the inspiration for Shakespeare's King Lear.

NOW is the time?

National Organising Week (NOW) is approaching and is run by the **Association of Professional Declutterers and Organisers** (www.APDO.co.uk). From 6-12 November Britain's organising experts want to motivate you to clear the clutter and help get the most out of your space, time, and belongings!

Sarah Bickers of www.FreeYourSpace.co.uk and **Katherine Blackler** of www.SortMySpace.co.uk are two of your local APDO members.

Here are their top tips on getting organised:

1. Declutter **BEFORE** planning storage so you can plan what you really need.
2. Don't get overwhelmed trying to tackle the entire house at once. Choose a room and focus on just one area at a time (e.g. the floor, countertop, cupboard, drawer).
3. Allocate time to sort through things. Switch off and eliminate likely distractions.
4. Getting started is often the hardest part. Take little steps if giant leaps are unrealistic. But definitely start.
5. Take 'before' photos. You'll be inspired by how far you've come.
6. Reward yourself for your achievements, both during and at the end of the process.
7. Ask for help if it seems daunting or it becomes too emotional reviewing belongings with your friends and family.

Good luck this National Organising Week!

Sarah and Katherine



6-12 Nov 2017
www.apdo.co.uk

Your local
APDO organisers:

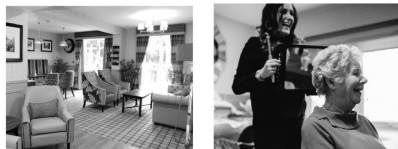
Katherine Blackler
sortmyspace.co.uk
07914 612531

Sarah Bickers
freeyourspace.co.uk
07914 096405

THE
Cinnamon
CARE COLLECTION

Reassuring Short-term Care

From Leah Lodge and Rectory Court
Care Homes - Blackheath, London



**Flexible, short-term care can provide
a well earned break for carers and
family members**

Ranging from a 2-week minimum stay -
up to 6 weeks - our beautiful en-suite
rooms, 24-hour care and safe and warm
environments give total piece of mind.

For more information call our
friendly team at Leah Lodge:

0208 318 2272

www.cinnamoncc.com

NEW CROSS NATURAL THERAPY CENTRE

394 New Cross Road London SE14 6TY

020 8469 0858 newxtherapy@btconnect.com

where experienced practitioners offer different ways
to support your health and well-being



www.newcrossnaturaltherapy.com



CATS @ HOME

Formerly Pet and Plant Nannies, established 1986

We care for your cats in the comfort and security of their own home during your absence.
We provide a reliable, trusted and confidential service recommended by Veterinary
Surgeons and endorsed by our many satisfied clients. References are available and we are
fully insured.

House plants watered too

Please contact **Viv Hutter** on 020 8692 0023 or email:
viv@cats-at-home.com or visit our website, www.cats-at-home.com
to discuss your and your cat's requirements.

Homeless charity

The 999 Club is small homeless charity based in Deptford now celebrating its 25th year. We run a Gateway Centre that gives access to our Advice & Support service, Learning & Activities Programme, Employability Support Service, Night Shelter and visiting Health and Wellbeing Services.

We believe that every individual has capabilities and capacities; people lead fulfilling lives when they have rich social networks which support them and to which they contribute; and small steps lead to big change. www.999club.org

Coaching opportunities in Brockley



Do you fancy yourself as the next Jose, Pep? Are you always tinkering with your Fantasy League Team? Why don't you bring some of that enthusiasm down to Hilly Fields on a

Saturday Morning! We are looking for more coaches as we are regretfully having to say goodbye and a massive thank you to Danail (coach with Brentford, completing UEFA B licence), Tim (studying sports coaching and management at Brunel University) and Ben (also studying sports coaching and management at Portsmouth University).

No coaching qualification? We can help. You just need to bring enthusiasm, commitment and a hunger to learn. Go to our website for more details.

Justin Thompson, Director North17Active Ltd/ Futsal@jam07983 534553
www.futsal-jam.co.uk

Respite care

Rectory Court and Leah Lodge residential homes offer the highest quality care in beautiful surroundings. Our homes offer a warm and supportive atmosphere in which our residents can live comfortable and fulfilled lives.

You might consider short-term care when you need:

- Extra assistance before returning home from hospital
- Continued short-term rehabilitation after a hip or knee replacement
- A place to stay when an emergency has made your home unsafe or uninhabitable

Short-term respite care can also help you experience what a residential home has to offer and see how you fit in with the residents who live there before you decide to stay permanently. If you are a caregiver, you might also consider a respite stay when you need a break — whether it's for work, holiday, or just a much-needed breather — and you don't want to leave a parent who is not fully independent.

Cinnamon Care, The Glebe, Blackheath, SE3 9TU. 020 8297 5860. rectory.haa@cinnamoncc.com
cinnamoncc.com. www.cinnamoncc.com.

Brockley 50+ Club

Every Wednesday, 11am-4pm

Brockley Social Club
240 Brockley Road, SE4

Come and enjoy an informal
chat and other activities:
bingo, darts, quiz, two coach
trips (funds permitting),
Christmas dinner, occasional
cream teas / fish & chips

For more information contact

Marcia on 020 8461 0860

Breakspears Mews
Community Garden

An oasis of calm and quiet



An Open Day in Breakspears Mews Community Garden on Saturday 15 July was enjoyed by many new and regular visitors. The garden was established by local residents to transform



a derelict and fly-tipped end of mews into a more friendly and neighbourly space. Our presence helps to prevent antisocial behaviour and demonstrates a constructive use of community space.

We welcome many visitors during the growing season and encourage participation in the garden. It gives an opportunity to meet new people and establish new friendships while gardening and over a cup of tea and cake.

For the past 2 years we have run a very successful Senior Gardening Club and many attendees have become regular gardeners with us. We organise outings to



other gardens such as Great Dixter and Hall Place and Gardens and have attended workshops at Grow Wild at Regents Park Allotments. These have been great fun for everyone participating.

The garden is now an oasis of calm and quiet and promotes biodiversity and local wildlife. We have our own resident robin, bats and foxes.

"The garden has become my haven, and since I have been involved, I have met many neighbours who have become good friends. After living in Brockley for 37 years, I feel that I belong here." (Sally)

For more information and dates of opening: breakspearsmews@brockleysociety.org.uk.
Access: Breakspears Mews, Ashby road, SE4 1UW or r/o St Peter's Court, 29-31 Wickham Road, SE4 1NE

Brockley Barbecue, 7 July



About 50 people came. We had music and laser lights from Sean and an almost full moon on Hilly Fields. Magical. *Photos: Lorna Jackson / Sean Ryan*



Friends of Hilly Fields

Our bird champions have continued their monthly survey of the park. The last quarter has seen sightings of the Great Spotted Woodpecker, a flock of lovely Long-tailed Tits, a Song Thrush, Goldfinches and Goldcrests and all the usual Crows, Magpies, Robins, Wrens, Parakeets, Great and Blue Tits etc. But there has been a strange shortage of House Sparrows. Have they migrated to the green gardens of Brockley Conservation Area?

Edimental Gardening

I wanted an edible garden, and I wanted a beautiful garden. I was inspired by places I'd come across, which were full of plants providing food, flowers, seeds, roots and more. I then discovered these had a name first coined by Steven Barstow - The Edimental Garden. And so began my plan. Twelve months into this journey I will be sharing the past year's progress of transforming a building site into a feast.

Ruth Wong

- Hear more at Brockley Society's AGM (*see p1*)



Phone Boxes

'Space for Dialogue', a new display, has been created at the corner of Breakspears Road, in one of three phone boxes on Lewisham Way owned by Brockley Society. At the Wickham Road corner we have a children's library. At Tyrwhitt Road our Micro Library continues to attract interest from the press, advertising agencies and film companies. We receive a new enquiry every month.

BT has discontinued its scheme to sell unused phone boxes to community groups so some enterprising residents in Hither Green came up with an alternative idea: a box outside someone's home.



Tyrwhitt- Loampit changes

Taylor's Food & Wine, the long-standing convenience shop at **1A Tyrwhitt Road**, suddenly closed in July. Mrs Daksha Patel



explained that their children insisted she and her husband retire.

The shop has been an important part of the community for many years and always generously supported Brockley Society's events. Local residents relied on it for myriad items on the way home from St John's station and in small emergencies. They will be much missed but we wish them well.

Meanwhile, Mukund Kumar and his wife Varsha, who have run **Londis (Spalding and Sparrow newsagent)** at **59-61 Loampit Hill** for many years, have now moved on to other things. Mukund grew up in Brockley when his parents ran the former Post Office in the same premises and he has always been a source of historical information about the area. Now he has handed the



shop over to Monaj Patel and family. We wish both families well.

The shop at **63 Loampit Hill**, corner of the terrace, has remained empty for well over a year. Many hoped it would become a cafe, which would be so useful to locals and those who use St John's station. We hear this is still the plan, and may come to fruition soon.

Newsletter index illustrates area's history

Local resident Tony McCartney has created a detailed index of Brockley Society newsletters from 1974 to 1994 which itself makes fascinating reading. It illustrates the history of what was happening in the area and of Brockley Society activities. We have put the index on the website to give a taste of what is available.

The complete set of our newsletters (since

1974) is available in our paper archives. More recent issues are available on the Brockley Society website and we hope to digitise the earlier ones in due course.

Our archive collection is fascinating but still needs substantial sorting. If anyone is interested in helping with this, to do perhaps two hours a week sorting or scanning please email chair@brockleysociety.org.uk.

PLANNING APPLICATIONS

Before you start making decisions on any changes to your property, we strongly advise you to look at the Council's guidelines at: www.lewisham.gov.uk. Click through myservices / Planning/ Conservation and urban design / Conservation areas / Brockley. The Brockley Conservation Area Supplementary Planning Document describes what building modifications will be allowed. Under the Article 4 direction external changes visible from public viewpoints require

planning permission (doors, windows, roof, driveways, gates, walls, fences, painting the exterior).

You can view planning applications in the Planning section of the website, and then select 'Search and comment ...' You must log in to make a comment supporting or objecting to an application.

To get involved in preserving the character of Brockley or for further guidance on planning issues, contact planning@brockleysociety.org.uk

7 May 2017 – 11 October 2017

Pending

134 Breakspears Road SE4. Single storey rear extension; dormer window in rear roof slope; roof light in side roof slope; sun tube light into crown of roof; replacement timber framed windows to all elevations.

33 Tyrwhitt Road SE4. Single storey rear extension; replacement front wall, gate and dropped kerb.

165 Upper Brockley Road SE14. Minor material amendment to allow increased increased massing of the building.

Flat A, 97 Tyrwhitt Road SE4. Single storey rear extension.

72 Manor Avenue SE4. Excavate front light well; enlarge existing basement; construct two storey rear extension; replace existing uPVC windows and doors.

10 Wickham Gardens SE4. Rooflight to rear roof slope; window to rear elevation; replacement grey slates to roof.

34 Tyrwhitt Road SE4. Replace existing cement roof tiles with Spanish slate roof tiles.

115 Breakspears Road SE4. Replacement timber sash windows to front and side; retention of timber sash windows and door to front.

101 Ashby Mews SE4. Change of use, alteration and extension to create a part single/part two storey live work unit (sui generis).

35 Chalsey Road SE4. Replace 1 window, install an additional window opening on side elevation; replace French doors with folding door at the rear.

Granted

St Cyprians Hall, Brockley Road, SE4. Signage.

13 A-B Wickham Gardens SE4. Replace timber double glazed windows in side and rear elevations; roof lights in side and rear roof slopes; re-roof part of existing roof; brick up doorway in rear elevation; reinstate front door; re-point and re-paint brick work.

170 Tressillian Road. Single storey rear extension.

30 Cranfield Road SE4. Single storey infill rear extension.

42 Veda Road SE13. Replacement roof design.

16 Coulgate Street SE4. New shop front and awning; one internally illuminated sign.

Flats A and B, 62 Geoffrey Road SE4. Replacement double glazed timber sash windows and door in front elevation; double glazed uPVC sash and casement windows and door to the rear and side elevations.

82A Upper Brockley Road, SE4. Single storey extension and decking to the rear; replacement timber sash window to the front elevation.

9 The Parade, Upper Brockley Road SE4. Alteration and conversion of upper floors to provide 1, one bedroom and 1, two bedroom, self-contained flats; rear extension and roof terrace at first floor level; dormer extension in the rear roof slope.

1-1a Brockley Cross SE4. Demolition of buildings and construction of a part two/part three storey building comprising a Class B1 office unit, 3, one bedroom and 2, two bedroom self-contained flats.

12A Montague Avenue SE4. Single storey rear extension.

3A Wickham Gardens SE4. Dormer extensions and 4 roof lights in the rear/side roof slopes.

62 Manor Avenue SE4. Replacement double glazed timber sash windows in front.

Flat 2, 42 Cranfield Road SE4. Replacement double glazed uPVC windows in rear.

10A Wickham Road SE4. Single storey rear extension at lower ground floor level; provision of a patio, steps to rear garden, soft landscaping; formation of a new access to the rear garden for the upper ground floor flat.

16 Coulgate Street SE4. Single storey rear extension.

18 Beverley Court SE4. Installation of replacement uPVC windows

70 Rokeby Road SE4. Replace double glazed timber windows and doors on side elevations; install three roof lights to the main roof slopes

78A Manor Avenue SE4. Replacement double glazed timber sash and casement windows; rear double glazed door.

10 Breakspears Mews SE4. Single storey rear extension; rooflight in rear roof slope.

73 Tressillian Road SE4. Retrospective application for the construction of a replacement front elevation boundary wall.

36 Tyrwhitt Road SE4. Single storey rear extension; rear extension at first floor level.

64 Overcliff Road SE13. Single storey rear extension; roof extension in rear roof slope

22 Cliffview Road SE13. Lawful Devt. Certificate: hip-to-gable and rear dormer roof extension; Juliet balcony; single storey rear extension; two rooflights to front.

291 Brockley Road SE4. Roof extension at second floor; conversion of the upper floors to provide 2, one bedroom self-contained flats

8A Tyrwhitt Road SE4. Change of use of existing builder's yard into a two storey plus basement 3 bedroomed house.

121 Albyn Road, SE8. Single storey rear extension.

17 Cranfield Road SE4. Replacement single storey rear extension.

Top Flat 8 Tressillian Crescent SE4. Replacement double glazed timber sash windows to the front and rear.

36 Vicars Hill SE13. Replacement garage on rear elevation; recreation of boundary walls and timber fencing; alterations to the rear garden.

19 Wickham Mews SE4. Installation of 14 panel photo voltaic on the roofs of the garage.

6 Beverley Court SE4. Replacement double glazed uPVC windows to front and rear.

36 Tressillian Road SE4. Replacement timber double glazed windows at first floor level to front and rear; balcony with metal balustrade and glazing over porch at upper ground floor rear.

Manse building, Raymont Hall, Wickham Road SE4. Demolish existing garage; construct single storey side extension for storage use.

St John's Vicarage, 2 St Johns Vale SE8. New ramp at the front.

88A Tressillian Road SE4. Single storey rear extension.

Flat A 16A Tressillian Road SE4. Single storey extension at the rear.

99 Tyrwhitt Road SE4. New access gates, front boundary wall and railings to the front.

182 Albyn Road SE8. Mansard roof extension; front and rear dormers, alterations to front and rear elevations, boundary treatments and gardens.

31 Upper Brockley Road SE4. Part one/part two storey rear extension.

14 Somerset Gardens SE13. Retrospective applications for replacement timber gate and fence panel to side; slatted trellis at the rear.

4 Tressillian Crescent SE4. Remove hardstanding in rear garden; raise ground level; install 2 windows in side elevation; remove existing rooflight in single storey rear extension and install 3 rooflights.

156C Tressillian Road SE4. Dormer extension in the rear roof slope.

Refused

3 Cliff Terrace SE8. Three storey house at the side.

8 Rokeby Road SE4. Dormer on rear roof slope; roof light in front roof slope; replace timber windows on all elevations, timber door on front elevation, re-point rear elevation brickwork.

152-154 Lewisham Way, SE14. Change of use and conversion of ground floor from Use Class A2 to C3 in the form of two studios and one, 1 bedroom self-contained flat.

69c Tressillian Road SE4. Minor Material Amendment: increase to the height of approved extension to incorporate a mezzanine floor; rooflights; alterations to the glazing design.

First floor Flat, 8 Tyrwhitt Road, SE4. Conversion into

two, one bedroom self-contained flats occupying the first and second floors; extensions to side and rear roofslopes; insertion of rooflights to side and rear.

17 Manor Avenue SE4. Rear roofslope dormer window; single storey rear extension and alterations.

121 Albyn Road, SE8. Mansard roof extension; 2 dormer windows in front and rear roof slopes

66B Brookmill Road SE8. Construction of two storey plus roof space 2 bedroom house in side garden.

Land on the east side

55 Loampit Hill SE13. Retrospective application for use as a builders yard (Sui Generis); provision of a container for storage; erection of fence to south side of the land.

99 Breakspears Road SE4. Two storey rear extension.

Trees

40F Wickham Road, SE4. Fell three lime trees.

16A Wickham Road, SE4. Fell 2 Elder, 1 Buddleia, 1 Walnut; Holly reduce by 1/3; three Sycamore reduce by 1/3; Ash Reduce by 1/3.

127B Tressillian Road, SE4. Fell 6 Leylandii.

104 Tressillian Road, SE4. Fell Oak, Whitebeam, Beech; crown reduce Beech; fell two of four Beech; crown reduce Oak, Beech, Pear; fell dead Cherry.

Crown thin Tree of Heaven.

68 Breakspears Road SE4. Fell Ash.

34 Rokeby Road, SE4. Fell Pittosporum.

29 Tyrwhitt Road, SE4. Ash: Fell and replace.

92 Breakspears Road SE4. Front 2 Limes: crown reduce to previous pruning points. Rear Birch, Yew: crown reduce by 30%; Ash: fell and replace

91 Tyrwhitt Road SE4. Front Lime: crown reduce by 30%. Rear 2 Limes crown reduce by 25%.

103 Manor Avenue SE4. Rear Ash: crown reduce (lateral 3m on all compass points).

Flat B, 122 Tressillian Road SE4. Rear Laurel: fell; Eucalyptus: crown reduce by 30%; Pear: Crown thin by 25%.

37 Tressillian Road SE4. Rebuild front boundary wall to protect Lime tree under TPO; lintel to provide roof protection; bricks cut to provide space for the tree.

132A Tressillian Road SE4. Leylandii: fell.

32 Geoffrey Road SE4. Eucalyptus: fell.

68 Tressillian Road SE4. Fell Bay, Pittosporum.

70 Upper Brockley Road SE4. Fell 2 Cypress.

76 Wickham Road SE4. Fell London Plane.

72 Wickham Road SE4. Crown reduce Cedar by 1.5m.

1 Wickham Gardens SE4. Fell Pear and replace.

71 Upper Brockley Road SE4. Fell Gleditsia or Robinia.

82A Upper Brockley Road SE4. Fell Bay.

154 Upper Brockley Road SE4. Rear - Ash: lateral and crown reduction; fell Eucalyptus; Bay: height and lateral reduction. Front - crown lint Elder.

64 Geoffrey Road SE4. Fell and treat stump of diseased Sycamore.

98 Tyrwhitt Road SE4. Fell rear Cypress.

66 Wickham Road SE4. 3 Prunus: fell. 2 Prunus: crown reduce.

3 Tressillian Crescent SE4. Fell Robinia due to fungal decay and replace; crown reduce London Plane.

21 Tressillian Crescent SE4. Crown reduce 2 London Plane and 2 Ash.

16B Tressillian Road SE4. Front: fell Tree of Heaven. Rear: fell Tree of Heaven, Sycamore; re-pollard Buddleia.

Are you interested in trees? We are seeking occasional help in looking at garden tree applications when Lewisham's Tree Officer forwards them to us as the conservation society. Please email chair@brockleysociety.org.uk.

Coordinated Brockley and Ladywell Front Garden Sale, 9-10 September



For the fifth year many houses took part in the Brockley and Ladywell Coordinated Front Garden Sale on 9-10 September

TOWN AND COUNTRY ROOFING

92 Shell Road, Lewisham, SE13 7DF

Office No: 020 8691 9475

Mobile: 07956 266 276

Email: townandcountryroofing@yahoo.co.uk

FREE ESTIMATES AND ADVICE

We are a family-run roofing business for over thirty years, Council approved,

No job too big or small - we do it all.

New Roofs, Overhauls, emergency repairs, slate tile, lead, felt roofs, guttering, fascia boards, soffits, cladding, chimney stacks repointed, garage roofs, Velux roof windows, loft insulation, three-layer felt systems, roof domes, Loft Specialists

- you name it, we do it.

Anything from guttering upwards

Rosie Reilly



PLUMBER

**Complete kitchens
and bathrooms fitted**

33 Years Experience

Tel: 020 8299 0764

Mobile: 07932 566 039

FREE ESTIMATES

Aaron Cripps Electrician



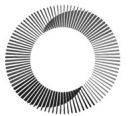
- C&G qualified domestic electrician.
- Accredited with the NICEIC.
- Full public liability insurance.
- Fault finding, lighting installation, sockets, light switches, outdoor power and fuse board upgrades.
- Free estimates, no job too small.

T: 07931 954994

E: aaron_cripps@btinternet.com

W: www.aaroncripps.co.uk

Sasha Gabbé Yoga



Yin + Restorative yoga

St John's church, opposite Brockley market
on Wednesday evenings 7pm - 8.30pm

Mats + all props provided
Floor based yoga - All welcome
Come + relax, release + unwind



www.sashagabbeyoga.com

sashagabbeyoga@gmail.com

Keep fit on Hilly Fields!



Team6.fit.



Free trial session

Phone Eric on

07943 733 206

20 YEARS' COMPUTER SERVICES

**System
Solutions**

Apple Mac & PC
specialists

East Dulwich, Brockley and beyond

Call Karl Brandt on 020 8693 3355

17-19 Blackwater Street, SE22 8SD
www.system-solutions.co.uk

UKULELE LESSONS

(Tressillian Road)

lessons £20 /



1 hour or £15 /30 mins



jackiemusigrant@hotmail.com

Jacqueline 020 8694 1409

[jacquelinegrantmusic tuition.](http://jacquelinegrantmusic tuition.wordpress.com/)

wordpress.com/

AJC

PLASTERING & PAINTING

All Forms of Modern
& Classic Plastering.

Moulding, Rendering, Cornicing,
Spread Plastering & Painting

Over 20 Years Experience

Contact Andrew for:

Free estimates.

Tel: 020 8694 0908

Mobile: 07787 912 679

Mobile: 07956 474 313

Email : andrewcampbell837@gmail.com

Web: www.ajcplasteringse4.com

Superb Guest House in Heart of Brockley

St James's Guest House,
48 Breakspears Road,
Brockley, London SE4 1UL

Tel: 020 8691 1206

Fax: 020 8691 0150

Mobile: 07956 403692

email: mail@sjguesthouse.co.uk

Website: www.sjguesthouse.co.uk

- Family run business
- Warm, friendly and homely atmosphere
- Strictly "No Smoking"
- Prices are very reasonable
- Free transport on arrival and departure to local stations

Brockley Social Club

240 Brockley Road, SE4 2SU

FUNCTION ROOMS FOR HIRE

Christmas Parties

Birthday parties

Meetings and Seminars

Funerals, Christenings,

Engagements

Weddings, Anniversaries

We also have catering available

For more details please call

020 8692 3264

Do you have jewellery repairs just sitting in your drawer?

Michele Franklin at Personal Jewellery does everything for you:

**RESTRINGING, RING SIZING, WATCH SERVICING,
WRITTEN VALUATIONS,
CERTIFIED DIAMOND REPLACEMENT
AND MUCH MORE!**

Call **07809 502 714** or
email michele@personaljewellerylondon.co.uk
and book an appt to meet her in a local café
or your own home if you live in Brockley!

Michele is an accredited member of the
BRITISH JEWELLERS ASSOCIATION
at www.personaljewellerylondon.co.uk

I AM A MEMBER OF
THE BRITISH
JEWELLERS
ASSOCIATION.



Alexander Technique



Individual lessons
Introductory workshops
With Michelle Cole
More information
www.thealexandertechnique.co.uk
Tel: 079 4003 3728



Good Works Carpentry and Building

- ♦ All carpentry; doors, sash windows and floors ♦ Flat packs
- ♦ Kitchens ♦ Bathrooms ♦ Tiling ♦ Plastering ♦ Decorating ♦ Fencing

Free estimates by fully insured local tradesman

S. Goodison 07963 897 802 020 8692 0260



Clickmas Trees

PREMIUM QUALITY REAL CHRISTMAS TREES

With the biggest variety of trees to choose from locally, we
are back this year to help support the library.
So far we have installed a café and improved the gardens.
Let's keep making the community library better, together.
Thank you for your custom.



Order Online clickmastrees.com

@clickmasT

/clickmastrees

FIND US AT:
CROFTON PARK LIBRARY
375 BROCKLEY ROAD
LONDON
SE4 2AG
TEL: 07572 464 186

OPEN DAILY FROM:
28TH NOVEMBER
MON-FRI 09:00 – 19:00
SAT - SUN 08:00 – 20:00

FREE LOCAL DELIVERY

In the heart of Brockley • Established over 10 years

Supporting health
and wellbeing **for you,**
for your family
– for life



THE
SUNFLOWER
CENTRE



Visit us at
thesunflowercentre.co.uk
or call us on **020 8694 2714**

81 Tressillian Road, Brockley, SE4 1XB



Doggrooming

(Pet Styling, Nail Clipping)

Cat Sitting

(Part of: SE4 and SE13)



By appointment

020 8150 6666

Side Gate, 61 Adelaide Av
Ladywell SE4 1JY

www.muttablygorgeous.com

ADVERTISEMENTS

Small 3.6cm x 6cm £15
Medium 7.5cm x 6cm £30
Large 12.4cm x 7.6cm £60

READERSHIP 8000

To advertise, email chair@brockleysociety.org.uk or phone Clare on 020 8692 3829.

All ads must be prepaid.

Cheques to Brockley Society, 76 Tyrwhitt Road, SE4 1QB.